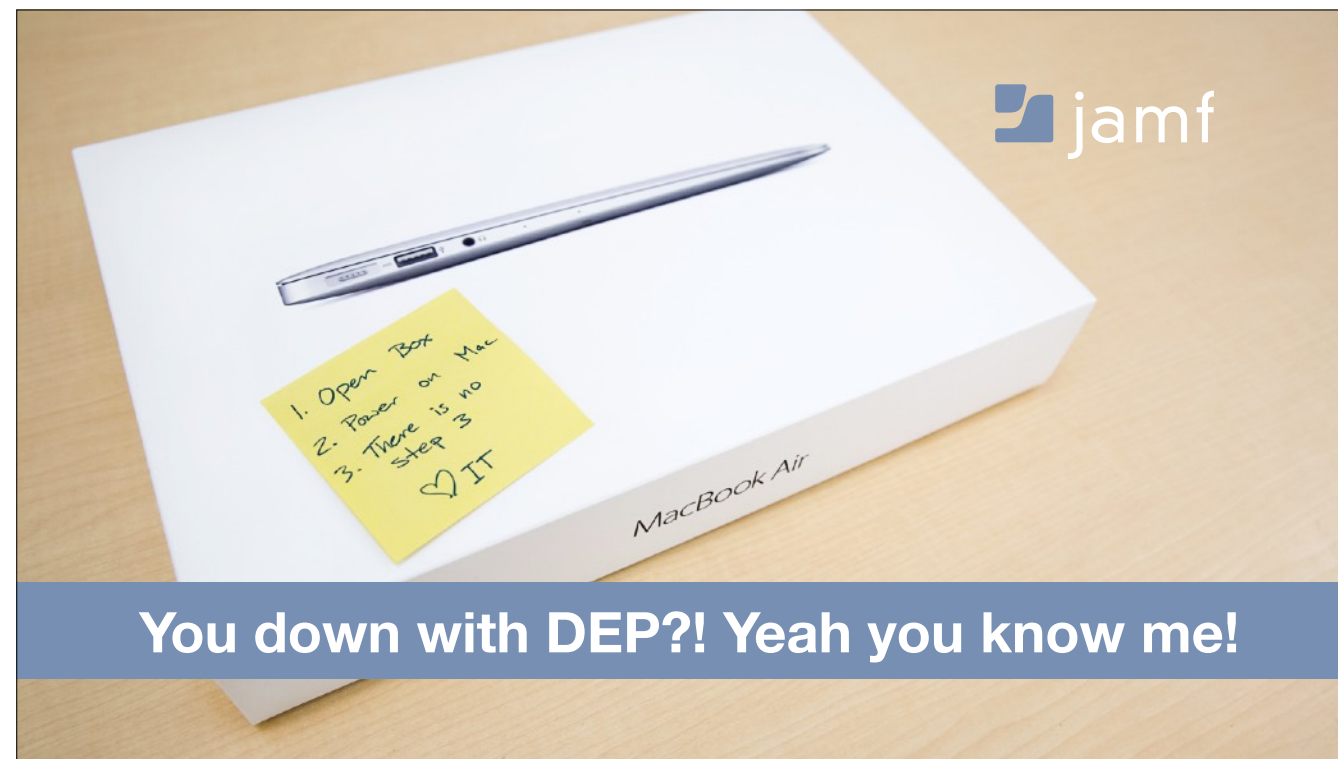


MacBook Air

You down with DEP?! Yeah you know me!



You down with DEP?! Yeah you know me!

Here to learn about DEP

Make end users excited to get their computer

Empower end users to get managed & receive content, focus on your projects, summer

What I'm talking about!

- Get into DEP
- Send Content
- Stay Updated
- Do it again!
- Naysayers...hold your horses



Kelly Watkins Conrad

Systems Engineer

kelly.watkinsconrad@jamf.com

Talk about me and my experience at Jamf and how I've helped customers do this. Talk about how Jamf uses DEP with new employees

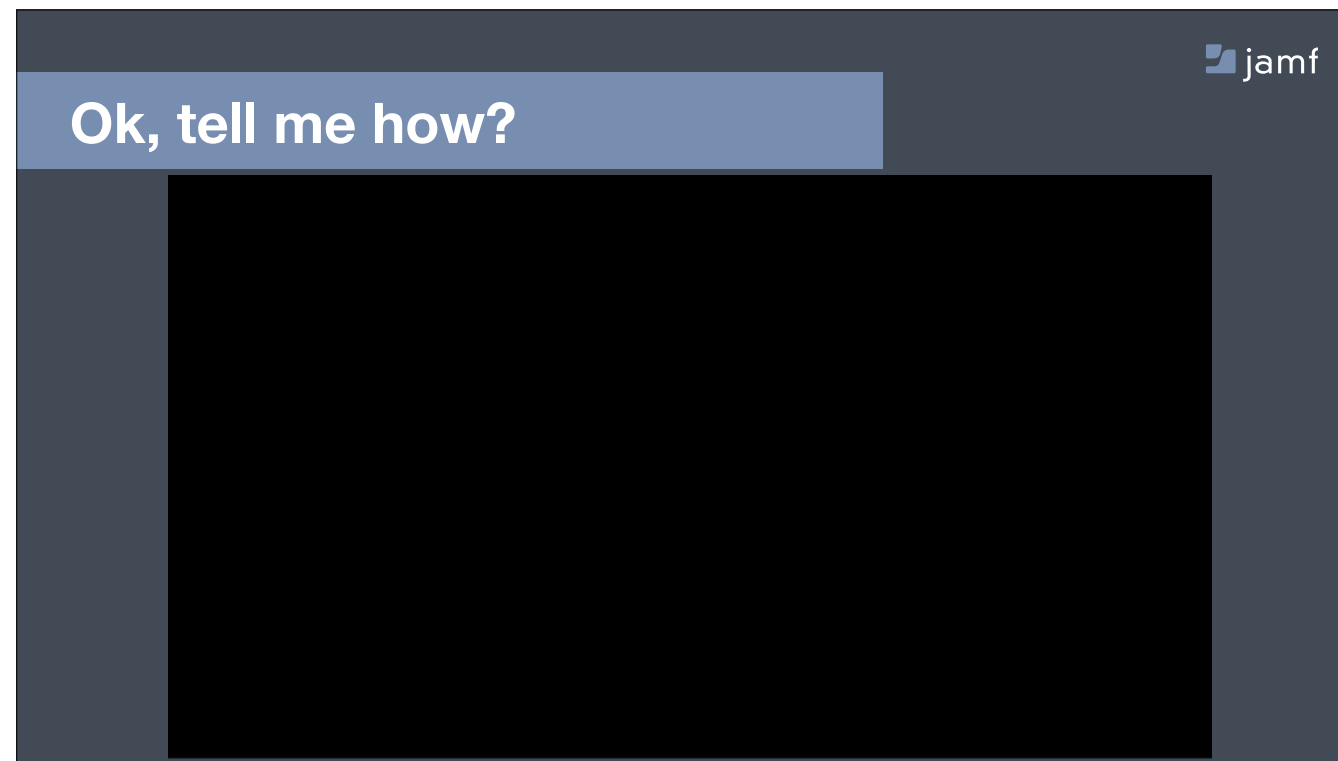
More than 10,000 organizations rely on Jamf



Started as a grassroots project to manage computers @ UW-EC. Just south of the border

Big education focus

Talk to OSI



- Language
- Region
- Keyboard
- Wifi>Doesn't need to be corporate network

Our current strategy?



It doesn't have to be this way

- Life cycle of DEP will make your life easier.
- Current: TMI, NetBoot, carrying HD's
- Takes time, money, staff, and our vacation

Look familiar?*

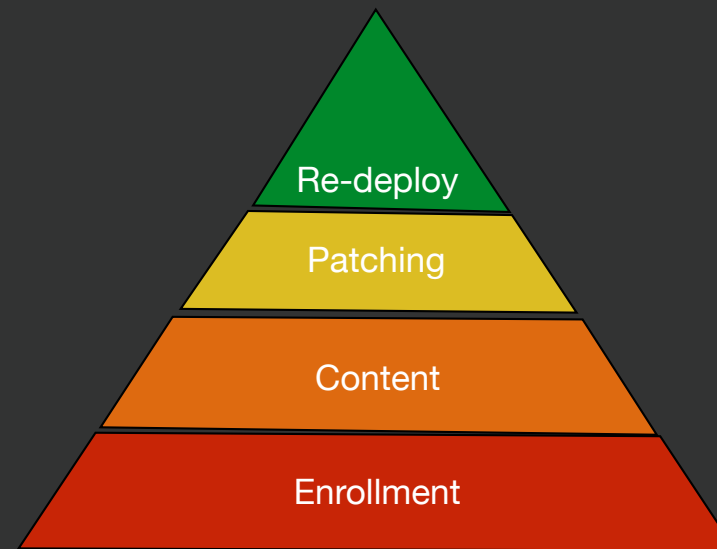


*Using DEP doesn't guarantee the prevent grey hair

Summer time woes:

- Configurations
- Updating Scripts
- Bad images
- Time
- Going grey

Order of Operations



DEP not a catch all-covered later

Getting devices into DEP-how?

Putting DEP to work for you

DEP token
Prestage
Power on Mac
Go through DEP
Go home early

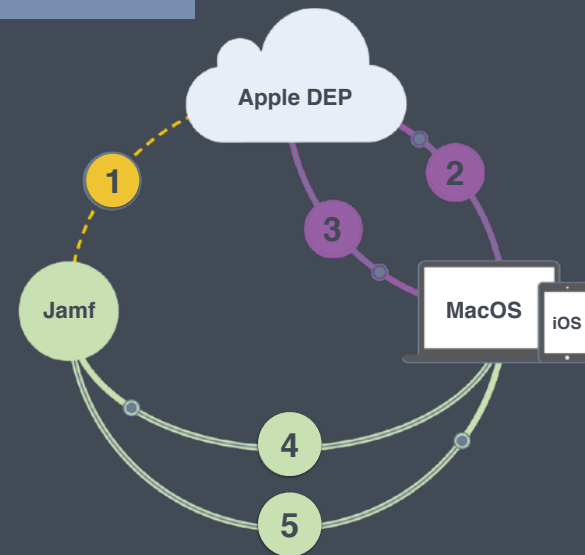
jamf



Put DEP token into management server

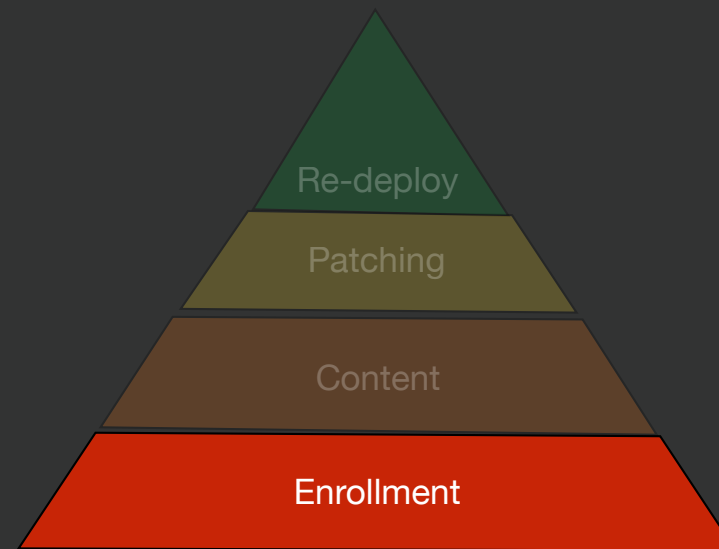
Wipe, Power on, Repeat

- 1 Setup: connect Jamf Pro server with Apple DEP service
- 2 During activation, device checks in with Apple DEP service
- 3 DEP service returns the enrollment details for the Jamf Pro server
- 4 Device enrolls with the Jamf Pro server
- 5 After enrollment, configuration profiles are installed

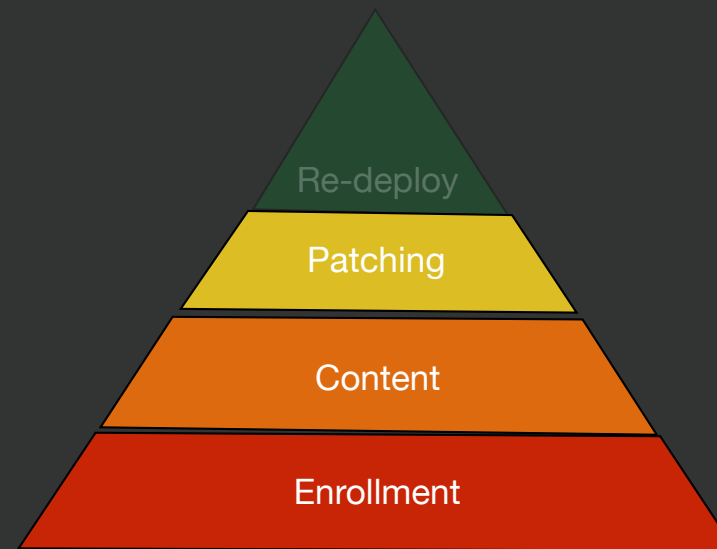


Fix JSS in image to Jamf

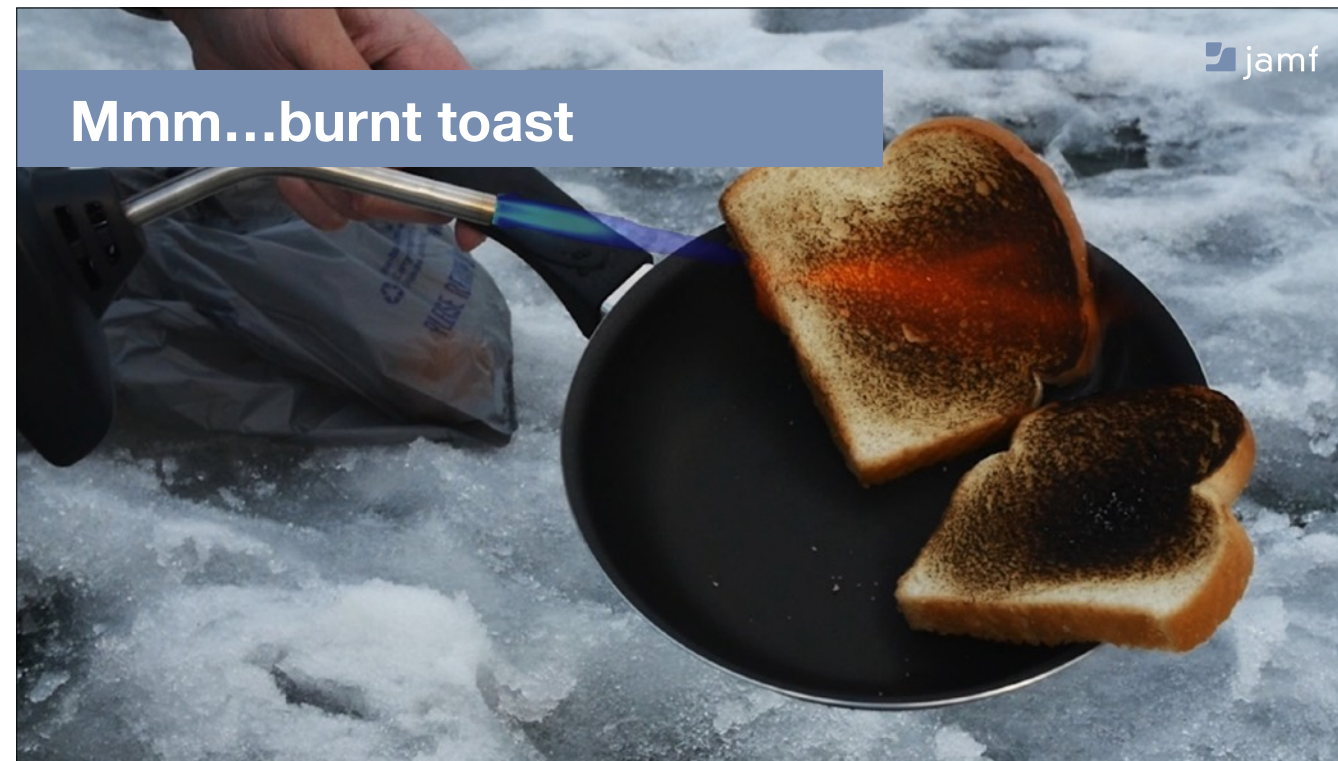
Order of Operations



Order of Operations



Staying up to date after enrolled



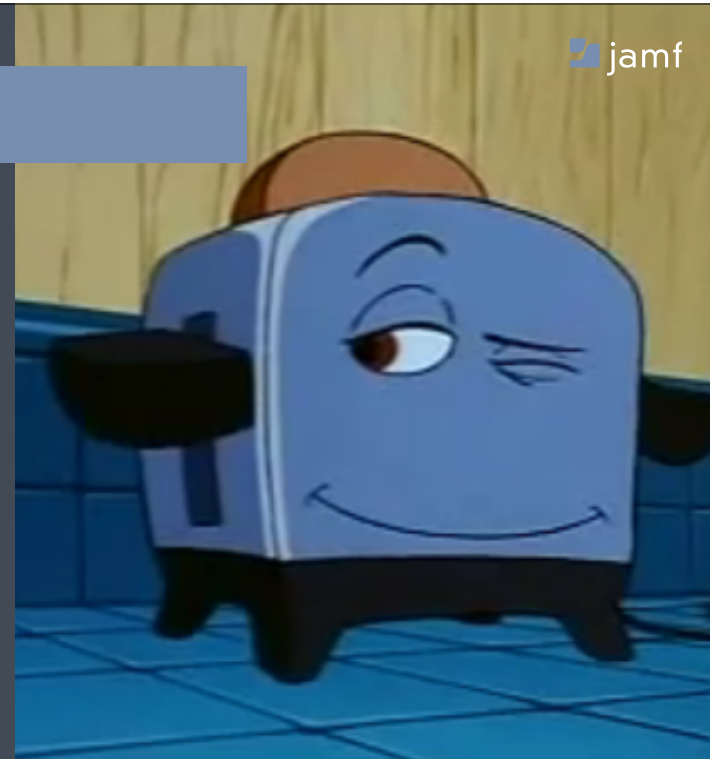
- Monolithic imaging=blowtorch
- DTalk about the active time you're using packaging and time when you
- Active vs passive time

Feelin' toasty instead

No OS Packages

No patching

Less touching



- Stay agile
- Your image will be outdated, spending time to re-do it at imaging time
- Command + R>System Recovery>DEP

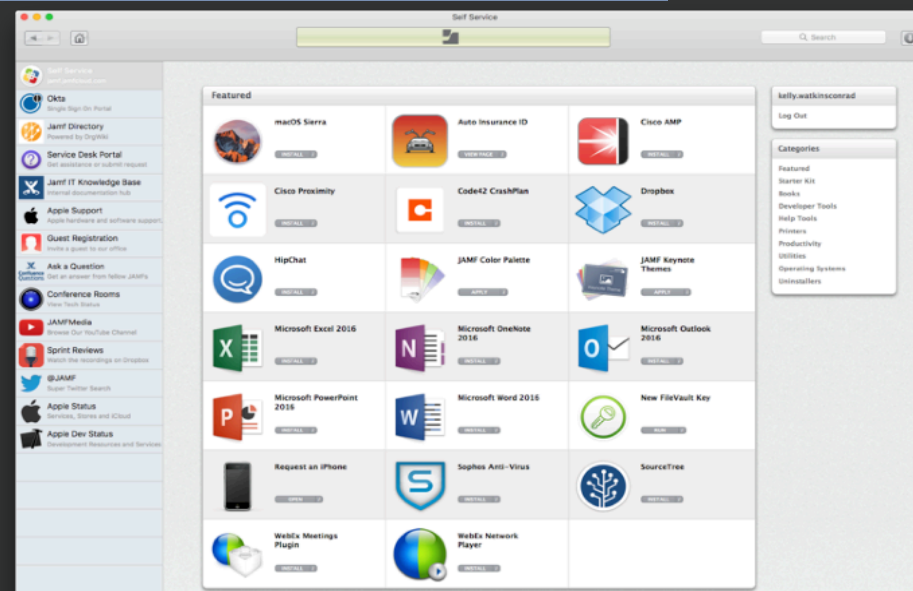
But, but....my packages!

Hey Bob... Can you help me out?
I need Keynote on my machine

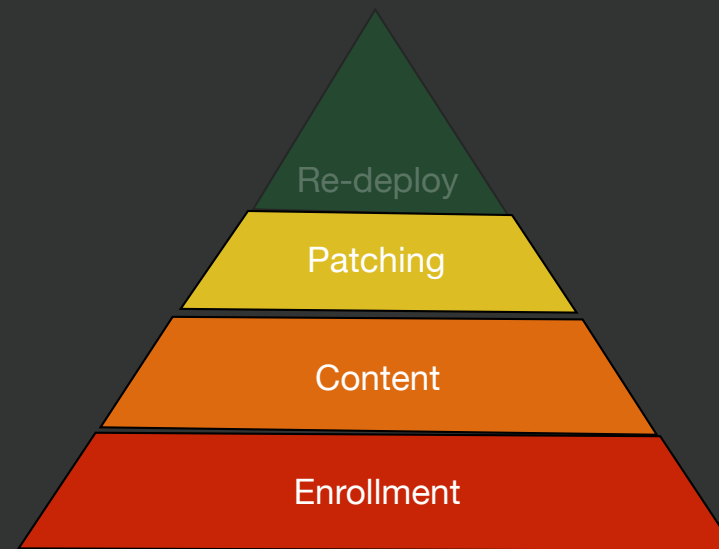
Already done, John. Check Self
Service. 😊 IT



Do it yourself!

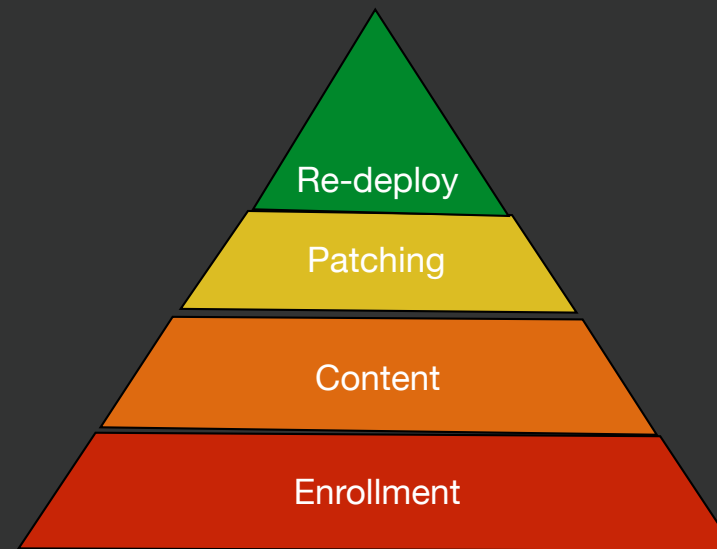


Order of Operations



Time to do it all over! Build it up

Order of Operations



Do it all over, how much time are we spending on this?

Active vs. Passive Time

	Monolithic	System Restore
Active	Creating, Patching, Packaging, etc. ~3 hours	Command + R ~5 minutes
Passive	Uploading, Imaging ~4 hours	Everything else ~30 minutes
	TOTAL TIME: ~36 hours	TOTAL TIME: ~40 minutes

- Ongoing project (blowtorch) vs. Do as needed (toaster)
- Actual time spent
- Longer than you think

“I can’t because...”

Initial accounts



Turn “I can’t” to “how can I?”

No longer an issue!

Local administrator account to use for managing computers enrolled via user-initiated enrollment

Account username
admin

Edit the management account via the [User-Initiated Enrollment settings](#)

☐ Create an additional local administrator account
Additional local administrator account to create for computers enrolled via user-initiated enrollment

Username
[Required]

Password
[Required]

Verify Password
[Required]

☐ Hide Account
Hide the local administrator account from users

Local User Account Type
Type of user account to create during enrollment

☐ Administrator Account
Make the user an administrator for the computer

☒ **Standard Account**
Make the user a standard user on the computer

☐ Skip Account Creation
The user will not create a local user account

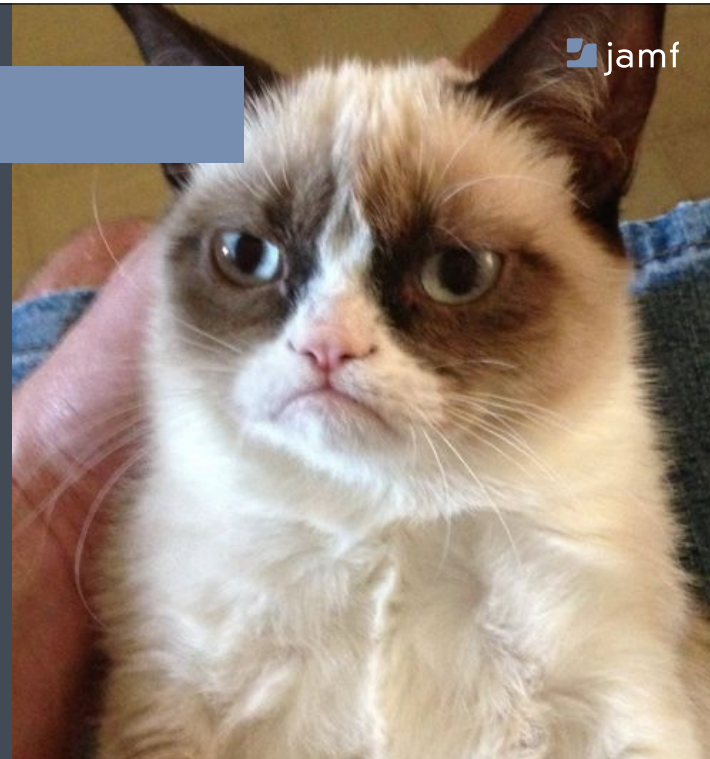
-Make standard account, or skip the account to use Mobile Accounts, don't need to use a directory service if you don't want to

“I can’t because...”

Initial accounts

Managing

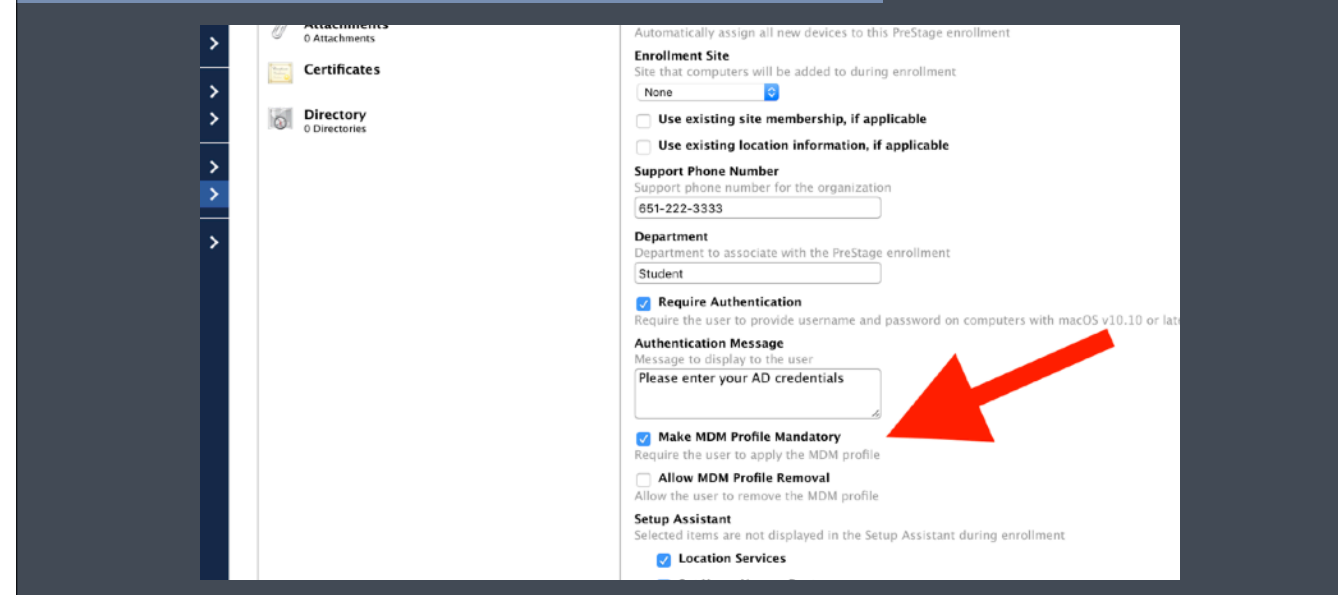
jamf



Turn “I can’t” to “how can I?”

-You’ll be home more, so maybe the can’t will just have to deal with DEP

Options!



Attachments
0 Attachments

Certificates

Directory
0 Directories

Automatically assign all new devices to this PreStage enrollment

Enrollment Site
Site that computers will be added to during enrollment
None

☐ Use existing site membership, if applicable

☐ Use existing location information, if applicable

Support Phone Number
Support phone number for the organization
651-222-3333

Department
Department to associate with the PreStage enrollment
Student

☒ **Require Authentication**
Require the user to provide username and password on computers with macOS v10.10 or later

Authentication Message
Message to display to the user
Please enter your AD credentials

☒ **Make MDM Profile Mandatory**
Require the user to apply the MDM profile

☐ **Allow MDM Profile Removal**
Allow the user to remove the MDM profile

Setup Assistant
Selected items are not displayed in the Setup Assistant during enrollment

☒ **Location Services**

-Make the MDM profile mandatory, or don't!

“I can’t because...”

Initial accounts

Managing

Differences



Turn “I can’t” to “how can I?”

One size doesn't fit all!

PreStage Enrollments		
+ New		
Name		Site
Administration DEP		None
Student DEP		None
Teacher DEP		None

-Make different presages for each different setup

“I can’t because...”

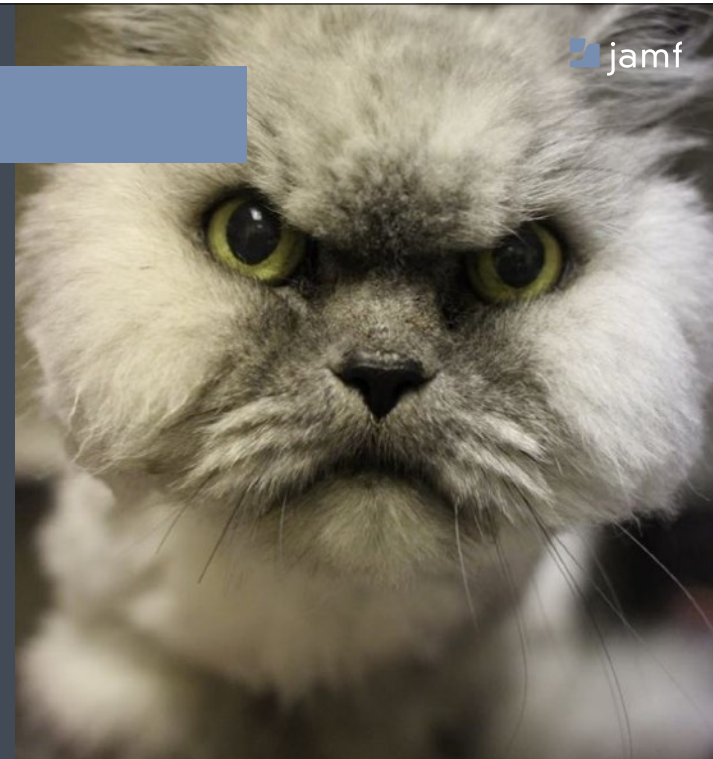
Initial accounts

Managing

Differences

It cuts into my cat picture time

jamf



Spend passive time doing something I *want to do* see puppy pictures

Cute puppies instead



Thank you Apple System Recovery!

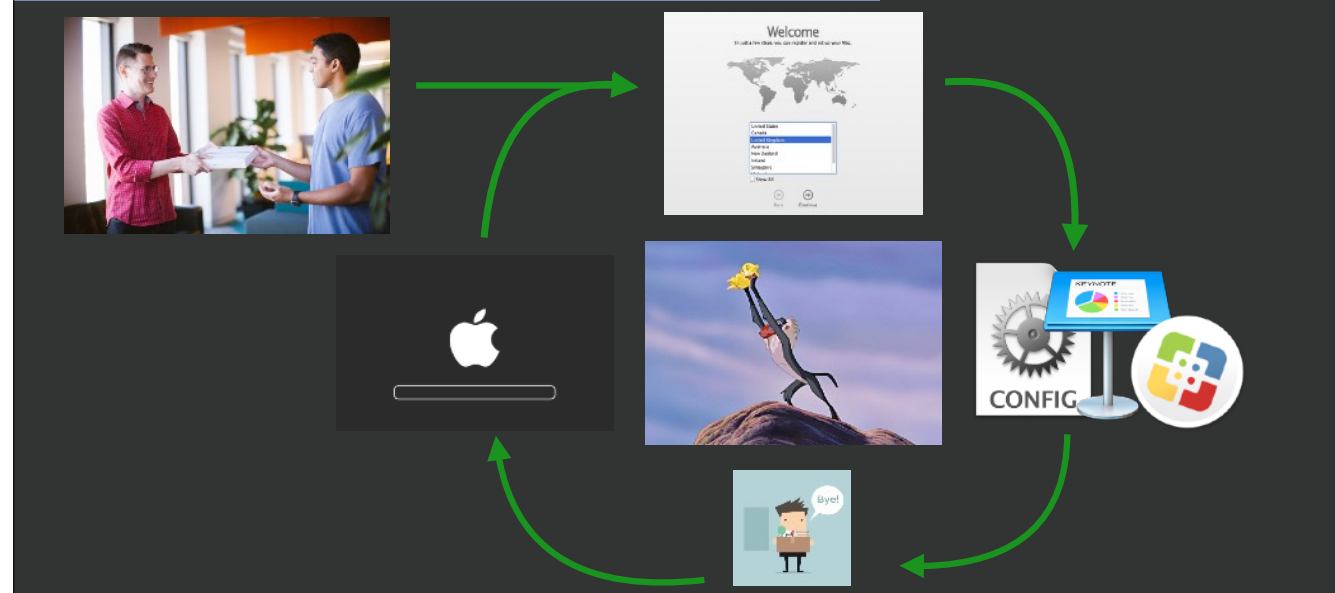
jamf

Best Practices

Yes, use it!	Explore other options
1:1	Lab
Fast internet connection	No/Limited connection
Updated OS/Hardware	Old hardware/below 10.9
Single partition	Secondary partitions

-Example school using 1:1 but also a lab
List of when it would be good, and times when maybe it wouldn't

Recap



Wipe-Internet Recovery, TMI, or NetRestore, do it en masse (press “N”) you have to drop in OS yourself

-Recap

- Why we want to use DEP-Time, money, & summer
- How DEP looks & getting into it
- Deploying content & patching-Active vs passive time. Remember Blowtorch vs toaster?
- Covering DEP “cant’s to how can I’s” and best practices



Thank you

